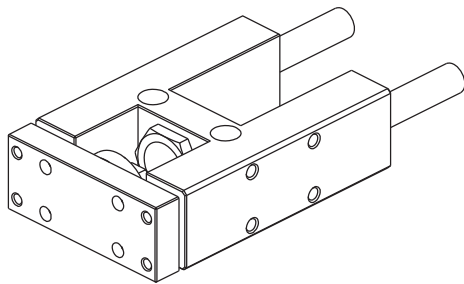
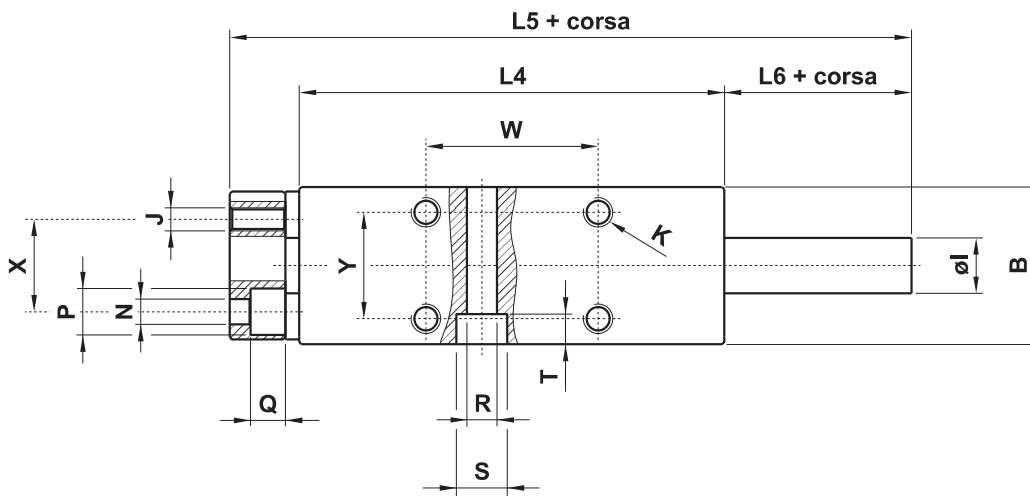
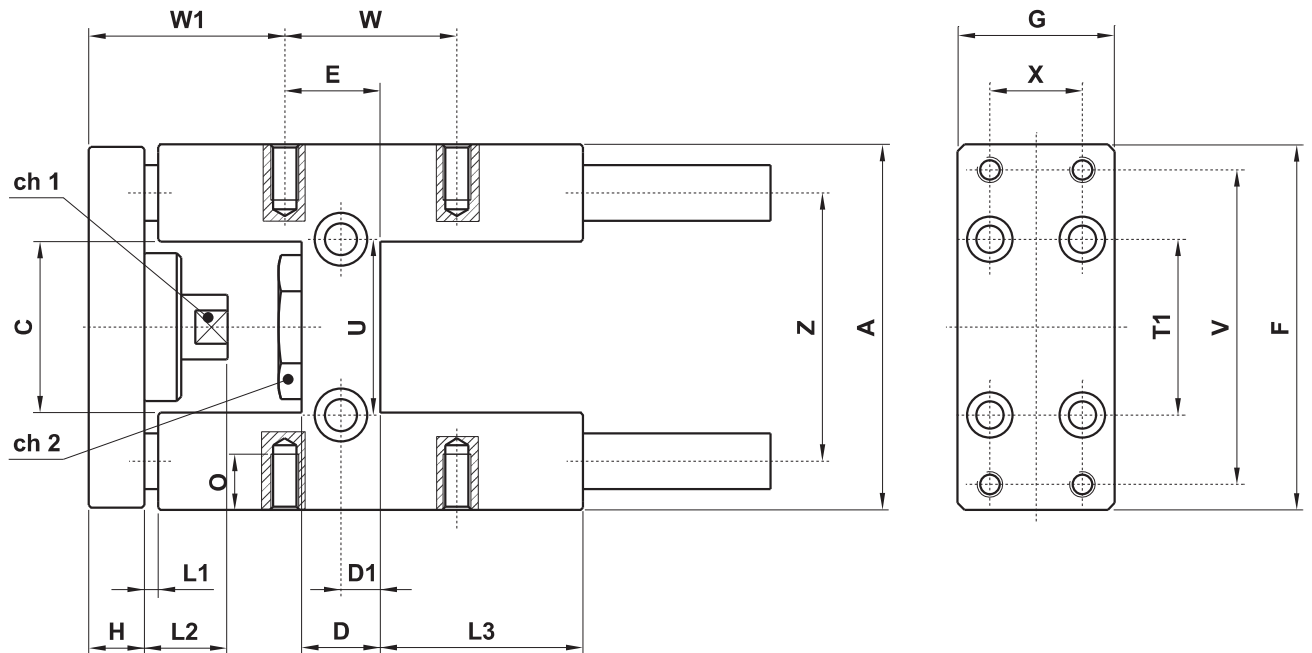


TIPO "H" PER MICROCILINDRI ISO 6432

type "H" for minicylinders ISO 6432



peso (g)
weight (g)

ø CIL	cilindro corsa 0 cylinder stroke 0	incremento corsa 100 mm 100 mm stroke increase
16	400	120
20-25	900	180

nipplo lungo
long coupling

ø CIL	L1	L2	L6
20	25	40	87
25	25	40	91

nipplo corto
short coupling

ø CIL	A	B	C	ch1	ch2	ch3	D	D1	E	F	G	H	øl	J	K	L1	L2	L3	L4	L5	L6	M	N	O	P	Q	R	S	T	T1	U	V	W	W1	X	Y	Z
16	69	30	30	8	10	24	12	6	8	66	29	10	10	M4	M4	25	18	46	68	123.5	73	4	4.5	6	8	4.5	5.5	9	5.5	32	24	58	18	-	18	22	49.5
20	79	34	37	12	13	27	17	8.5	15	78	32	12	12	M5	M6	3	18	58	108	166	43	5	5.5	9	10	7.5	6.5	11	6.5	38	38	68	32.5	50	20	23	58
25	79	34	37	12	17	27	17	8.5	15	78	32	12	12	M5	M6	3	18	58	108	166	43	5	5.5	9	10	7.5	6.5	11	6.5	38	38	68	32.5	50	20	23	58